

MARKETPLACE AT SAVANNAH RIDGE

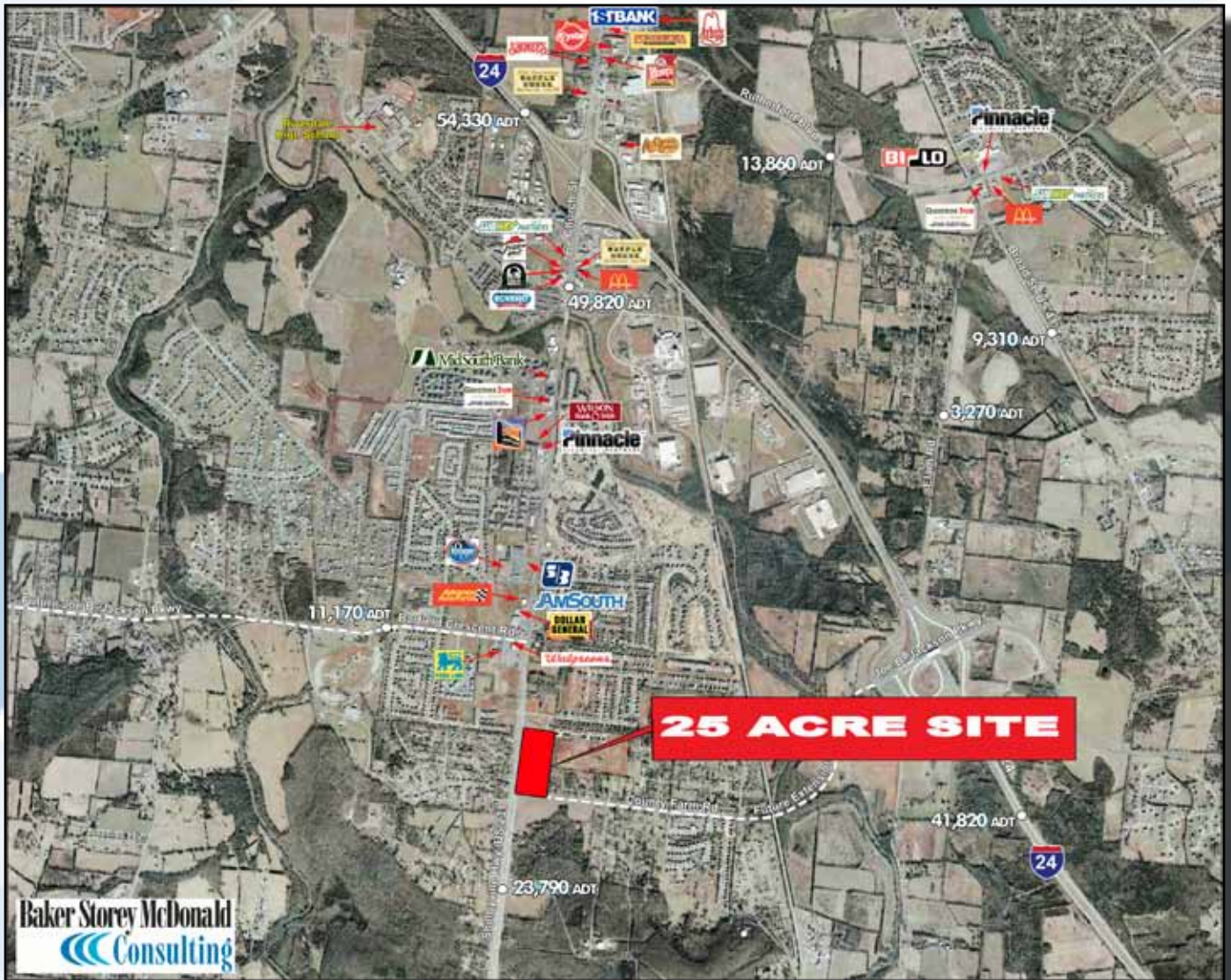
MURFREESBORO, TENNESSEE



3001 Armory Drive
Suite 250
Nashville, TN 37204
(615) 373-9511
fx (615) 373-9542

WWW.BSMPROPERTIES.COM

Baker Storey McDonald
Properties
PROVEN RETAIL SOLUTIONS



Location

Highway 231
Murfreesboro, Tennessee
Rutherford County

Traffic Count

49,290 cars per day
on Highway 231

Space Available

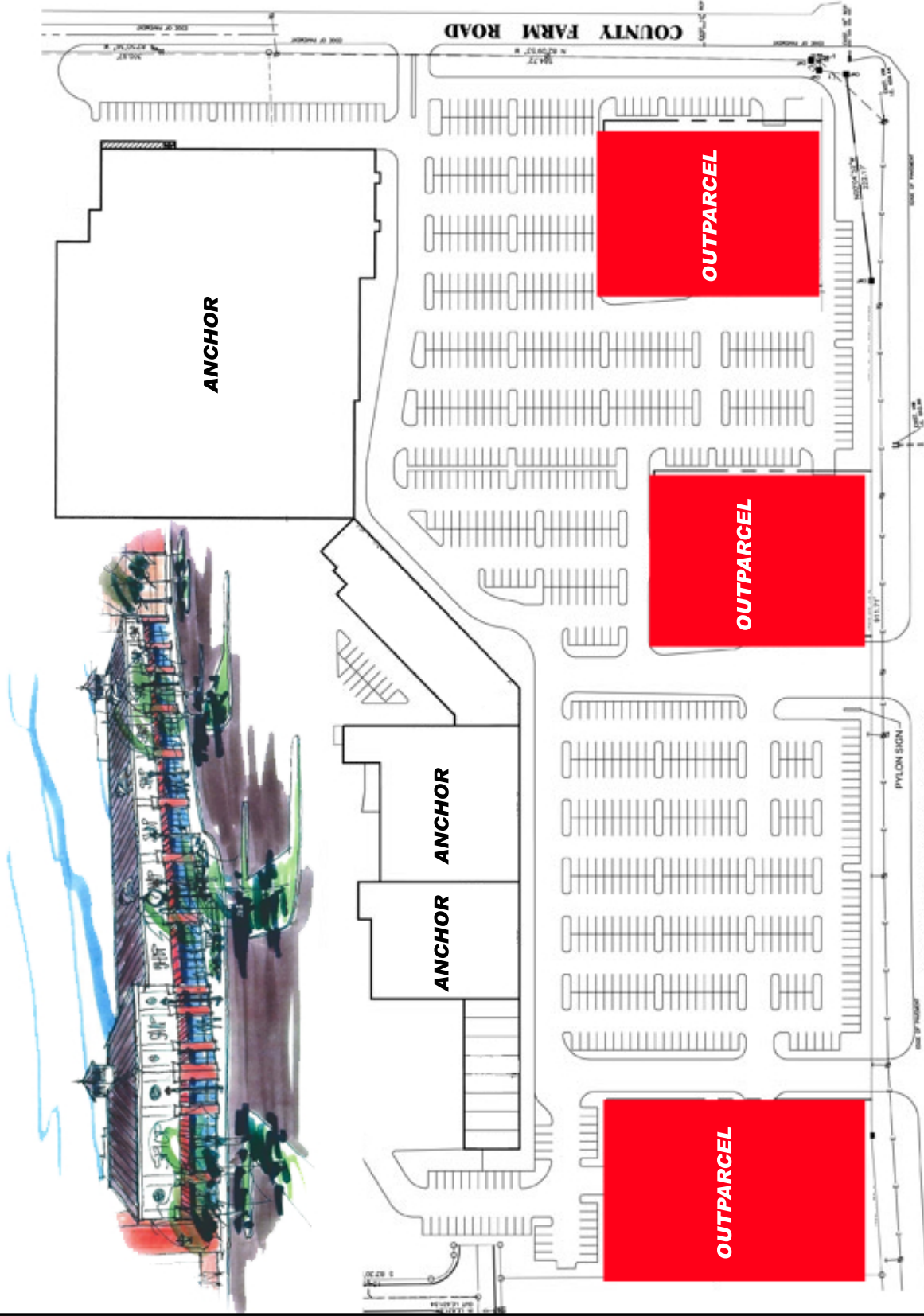
Upto 200,000 sq ft
Outparcels also available

Demographics

2010	1 mile	3 mile	5 mile
Population	1,368	14,886	56,172
Avg HH Income	\$74,643	\$70,146	\$62,591
Med HH Income	\$66,902	\$58,903	\$50,388

Property Features

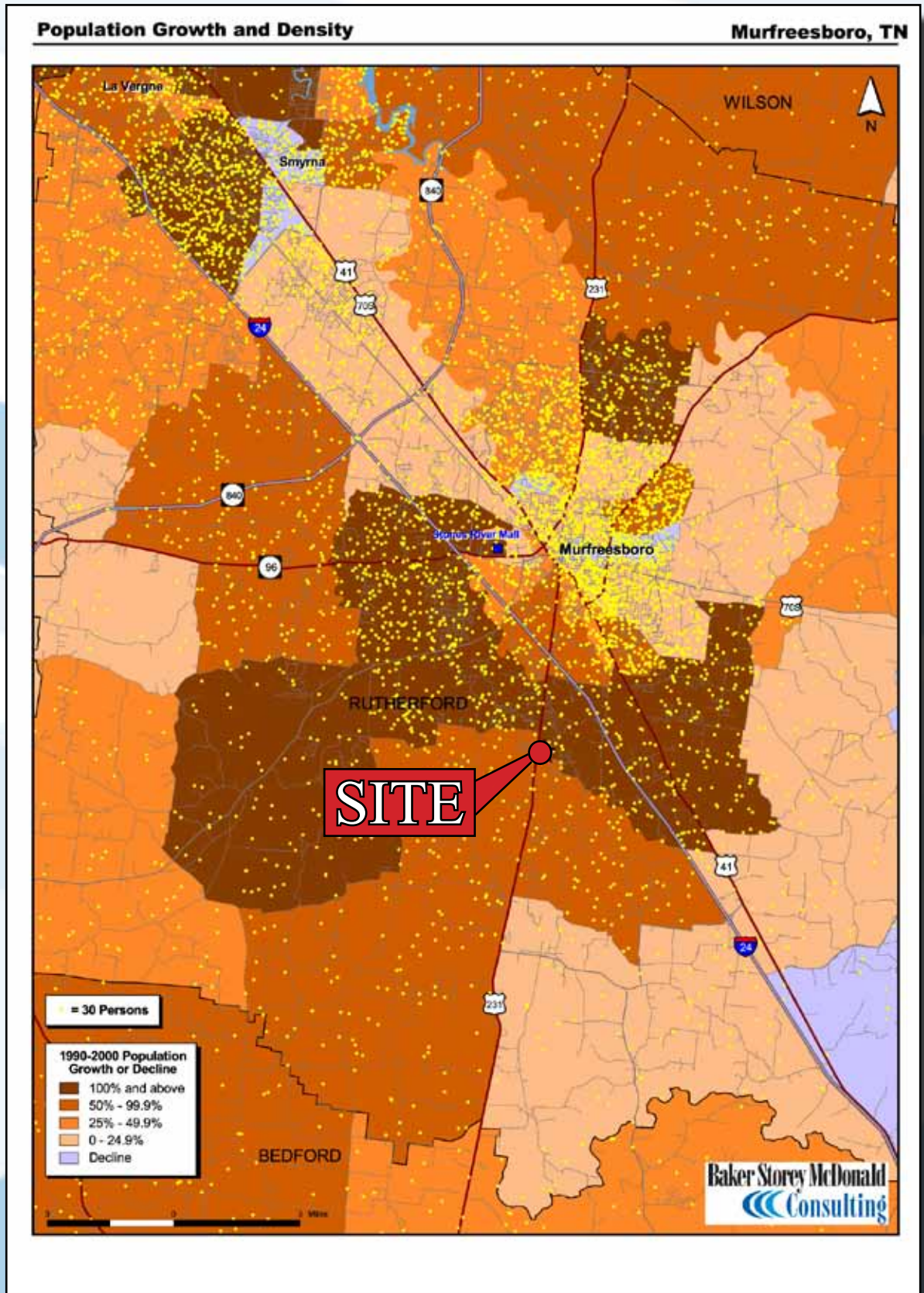
- * Strong, emerging trade area with solid income.
- * Phenomenal Trade Area growth rate over 60% in the last decade.
- * 231 Corridor should be second location for many big box tenants currently on Highway 96
- * Situated at intersection of future southern bypass to be completed 2011
- * Will have excellent interstate access



SAVANNAH RIDGE

MURFREESBORO, TENNESSEE

SAVANNAH RIDGE MURFREESBORO, TENNESSEE



For Information, contact Carl Storey or Allen McDonald
3001 Armory Drive - Suite 250, Nashville, Tennessee 37204, ph (615) 373-9511, fax (615) 373-9542 cstorey@bsmproperties.com
allen@bsmproperties.com
www.bsmproperties.com